



Vision/Mission



Strategy



Plan for 2007-2009

ETIC Meeting

February 17, 2006

Steps for Today

- ✦ Review Vision/Mission
- ✦ Review Strategy
- ✦ Agree on process for developing ETIC Proposal for 2007-2009 Biennium

Vision/Mission

- ★ Are there essential & enduring guiding principles / core values?
- ★ What is the enduring reason for ETIC's existence? Or, what would Oregon lose if ETIC ceased to exist?
- ★ How would we describe our long-term goal?
- ★ What would be an engaging vision that would result from achieving the goal?

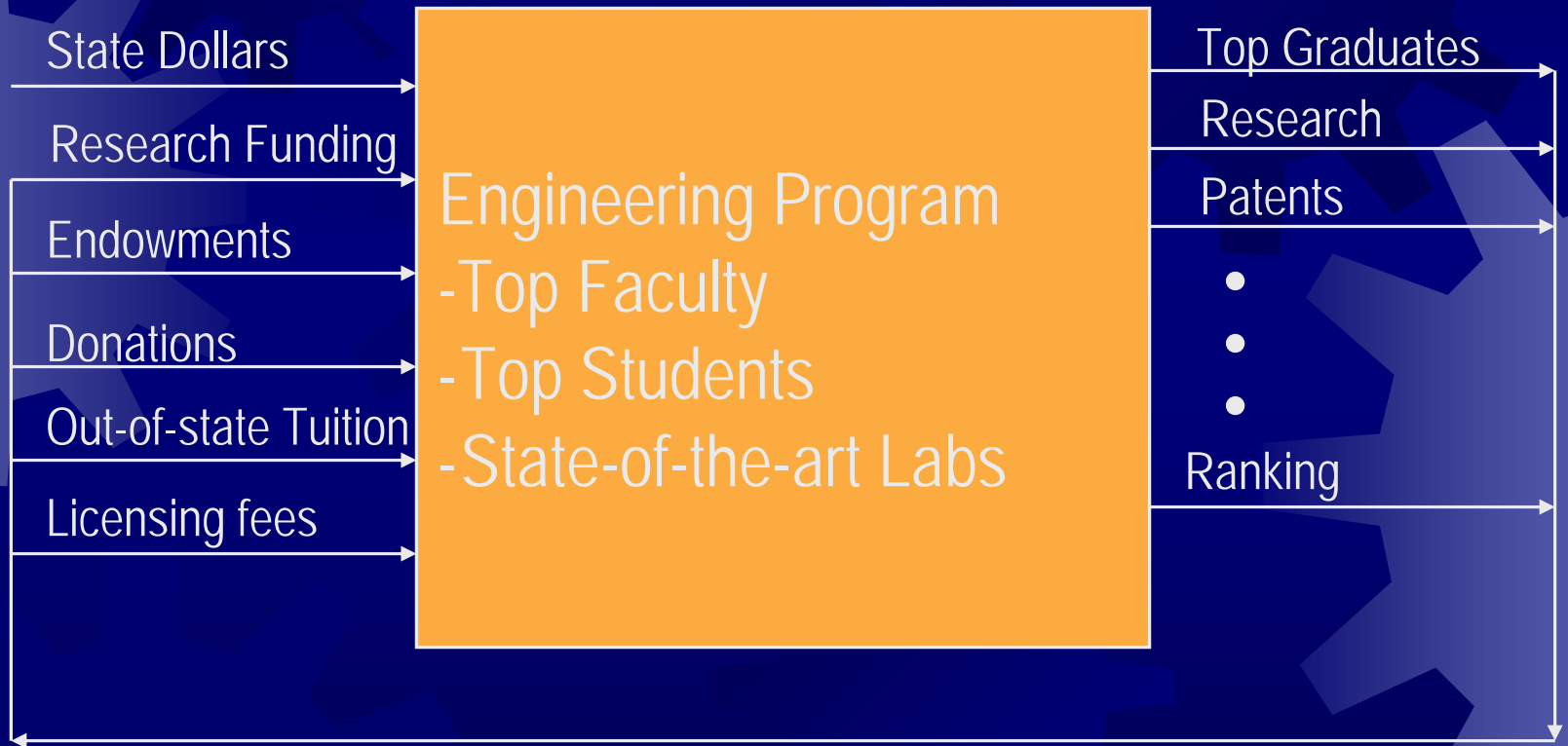


Draft Vision Statement

Make Oregon's engineering & technology education programs globally competitive such that they attract students and research grants from all over the world. Increase the financial base through much larger research funding, endowments, and out-of-state tuition.

Leverage our enhanced position to provide competitive advantages to key industry clusters and provide educational opportunities to Oregonians.

Strategic Feedback Model



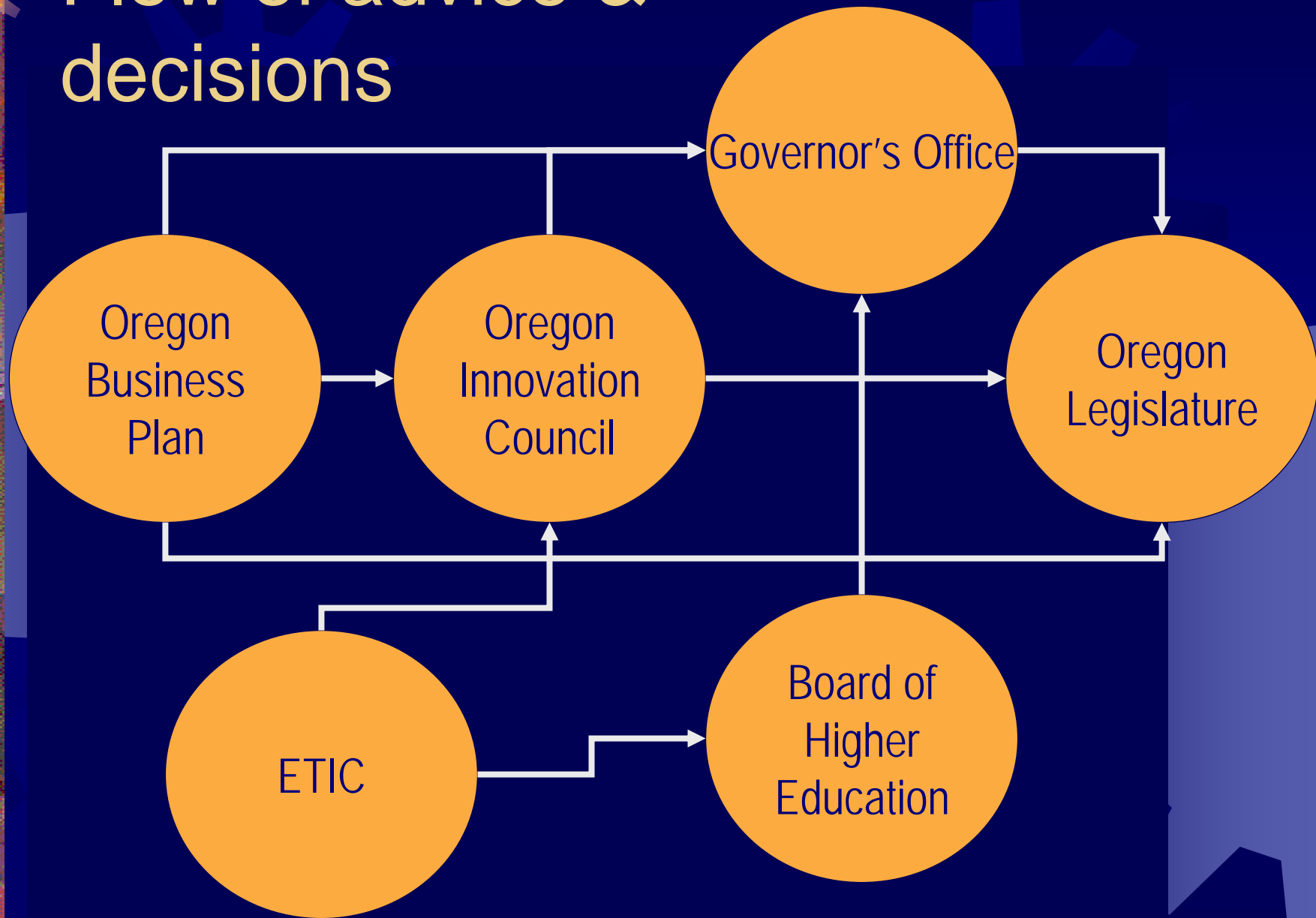
Draft Goals Statement for each campus

- ☀ Choose one or more benchmark programs, aka “aspirational peers”
- ☀ Identify inputs required to achieve success
 - __X external research funding by _____
 - __X endowments by _____
 - __X donations by _____
 - __X out-of-state tuition by _____
 - __X license fees by _____

Strategic Questions

- ✦ Focus: What kinds of world-class engineering programs should Oregon have in order to attract funding per goal?
- ✦ Invest: What resources are required to create these programs?
 - State funds
 - Research funding
 - Endowments
 - Donations
 - Out-of-state tuition
 - Licensing fees
- ✦ Metrics: What metrics are associated with making progress towards our goals?
 - Above plus
 - Graduates
 - Research
 - National ranking
 - Commercialization
 - State funds

Flow of advice & decisions



Consensus: Education & Research Drive Economic Growth

Timeline for ETIC 07-09 Plan

☀ Deadlines

- ☀ Policy Package to Board of Higher Ed by June(?)
- ☀ Capital proposals to Board by August(?)

☀ Governor's budget in Nov/Dec

☀ Legislature meets from Jan through June(?) 2007

☀ Our milestones:

- ☀ ETIC Meetings: 3/20, 5/5, 7/24, 9/22
- ☀ ETIC issues proposal criteria by 3/5
- ☀ Campuses develop strategic goals and preliminary plans by 3/20
- ☀ Goals and plan summaries reviewed on 3/20
- ☀ Campuses submit proposals by 3/31
- ☀ ETIC reviews proposals by 4/15
- ☀ ETIC approves plan on 5/5



Reference Slides

Private Support – 03-05 Biennium

| University | 03-05 Forecast (M\$) | Private Support for Biennium (M\$) | Variance (M\$) |
|----------------|----------------------|------------------------------------|----------------|
| EOU | 0.075 | 0.012 | -0.063 |
| OG/OHSU | 4.000 | 5.524 | 1.524 |
| OIT | 0.970 | 1.276 | 0.306 |
| OSU | 19.300 | 22.013 | 2.713 |
| PSU | 7.880 | 10.917 | 3.037 |
| SOU | 0.536 | 0.519 | -0.017 |
| UO | 4.240 | 3.417 | -0.823 |
| WOU | 0.075 | 0.041 | -0.034 |
| TOTAL | \$37.076 | \$43.720 | \$6.644 |

Total Degrees Granted

2003-2005 Biennium Report (as of 6/30/05)

| | Academic Year Ending 6/04 | | | Academic Year Ending 6/05 | | |
|--------------|---------------------------|------------------------------|------------|---------------------------|------------------------------|-------------|
| | AY04 Forecast | Actual Degrees Granted | Variance | AY05 Forecast | Actual Degrees Granted | Variance |
| EOU | 5 | 15 | 10 | 11 | 14 | 3 |
| OGI | 135 | 199 | 64 | 145 | 99 | (46) |
| OIT | 208 | 214 | 6 | 225 | 218 | (7) |
| OSU | 729 | 754 | 25 | 760 | 728 | (32) |
| PSU | 360 | 408 | 48 | 389 | 461 | 72 |
| SOU | 50 | 41 | (9) | 65 | 34 | (31) |
| UO | 115 | 116 | 1 | 125 | 100 | (25) |
| WOU | 42 | 43 | 1 | 44 | 32 | (12) |
| TOTAL | 1,644 | 1,790 | 146 | 1,764 | 1,686 | (78) |

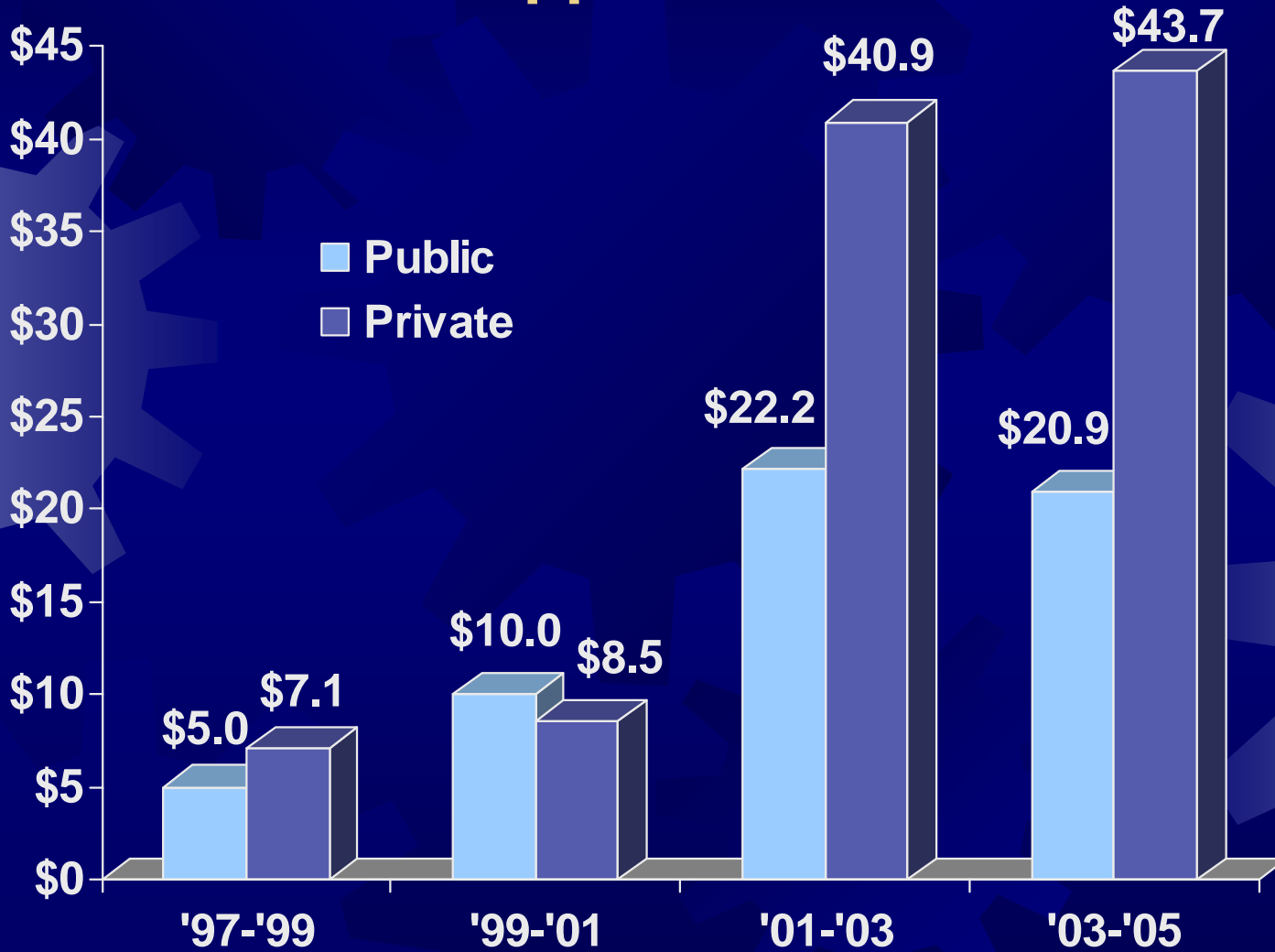
Total Research Expenditures

2003-2005 Biennium Report (as of 6/30/05)

| | Academic Year Ending 6/04 | | | Academic Year Ending 6/05 | | |
|----------------|---------------------------|-----------------------------|-------------|---------------------------|-----------------------------|-------------|
| | AY04 Forecast | Actual Research (\$M) | Variance | AY05 Forecast | Actual Research (\$M) | Variance |
| EOU | 0.00 | 0.00 | 0.00 | 0.00 | 0.00 | 0.00 |
| OHSU/OU | 13.00 | 15.00 | 2.00 | 13.00 | 14.31 | 1.31 |
| OIT | 0.02 | 0.02 | 0.00 | 0.02 | 0.02 | 0.00 |
| OSU | 20.00 | 22.00 | 2.00 | 20.50 | 24.20 | 3.70 |
| PSU | 3.40 | 3.13 | (0.27) | 3.90 | 4.45 | 0.55 |
| SOU | 0.08 | 0.09 | 0.01 | 0.10 | 0.24 | 0.14 |
| UO | 8.00 | 8.88 | 0.88 | 8.00 | 7.24 | (0.76) |
| WOU | 0.00 | 0.00 | 0.00 | 0.00 | 0.00 | 0.00 |
| TOTAL | 44.50 | 49.12 | 4.62 | 45.52 | 50.46 | 4.94 |

ETIC Private Support Growth

Dollars in millions



Combined Undergraduate and Graduate Degrees

| | AY99 Baseline | AY05 Actual | Gain | AY09 Forecast | Gain |
|-----------------|--------------------------|--------------------|-------------|--------------------------|-------------|
| EOU | 0 | 14 | 0% | 21 | |
| OHSU/OGI | 131 | 99 | -24% | 135 | 3% |
| OIT | 128 | 218 | 70% | 274 | 114% |
| OSU | 543 | 728 | 34% | 800 | 47% |
| PSU | 266 | 461 | 73% | 569 | 114% |
| SOU | 38 | 34 | -11% | 89 | 134% |
| UO | 79 | 100 | 27% | 192 | 143% |
| WOU | 40 | 32 | -20% | 46 | 15% |
| Total | 1,225 | 1,686 | 38% | 2,126 | 74% |

Key:

AY99 = Academic Year Ending June 1999

AY05 = Academic Year Ending June 2005

AY09 = Academic Year Ending June 2009